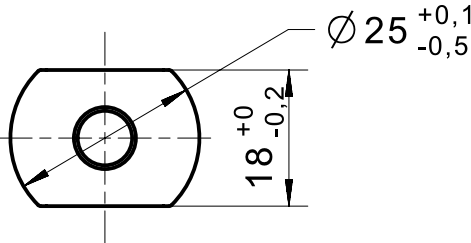
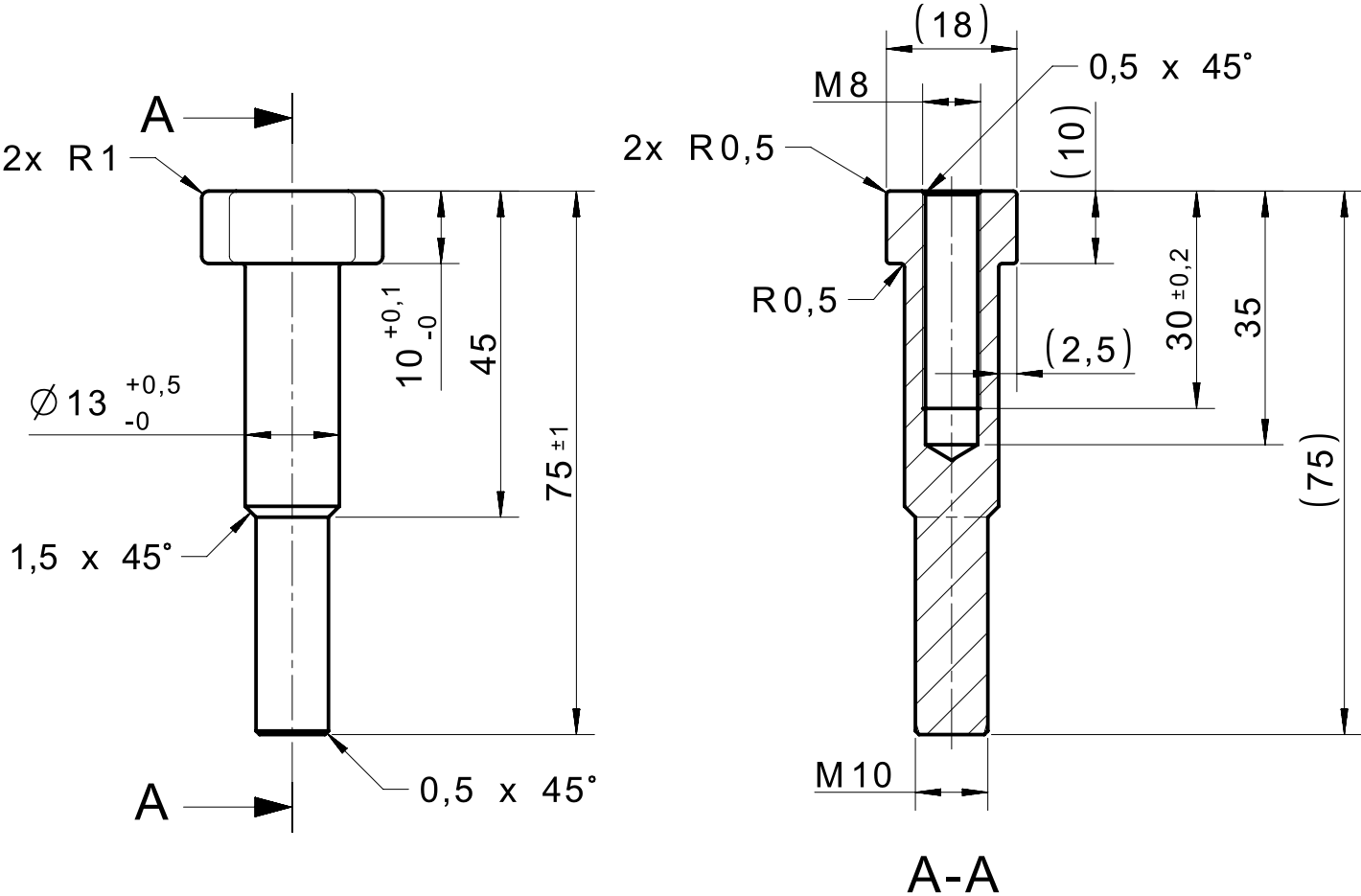
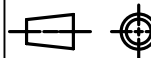


Surface corrosion protection system

The entire surface of the construction is defined as reference areas: O-1-1



- Note1 All dimensions are in mm.
- Note2 In case of conflict between requirements of 2d-drawing and any received reference 3d file or DXF file, then the requirements on the 2d-drawing shall prevail.
- Note3 General tolerances:  
For unspecified measurements the tolerance classes listed below apply:  
The tolerances for linear dimensions:  $\pm 0,5$   
The tolerances for angular dimensions:  $\pm 0,5^\circ$
- Note4 Thread tolerance class - Thread type: Internal, Pitch: Coarse according to ISO 261:1998, Tolerance class: 6H according to ISO 965-2:1998.  
Final finish of the thread after the coating process of the product has been completed: The thread must meet the requirements for the use of GO/NO GO gauge. Also, it must be possible to screw on the GO gauge/nut with a torque of maximum  $0.001 \cdot d^3$ . However, no more than 5 Nm must be applied. Key: "d" is the Nominal thread diameter in mm.
- Note5 Thread tolerance class - Thread type: External, Pitch: Coarse according to ISO 261:1998, Tolerance class: 6g according to ISO 965-2:1998.  
Final finish of the thread after the coating process of the product has been completed: The thread must meet the requirements for the use of GO/NO GO gauge. Also, it must be possible to screw on the GO gauge with a torque of maximum  $0.001 \cdot d^3$ . However, no more than 5 Nm must be applied. Key: "d" is the Nominal thread diameter in mm.

Pos	Qty	Dimension	Alt. Dim. 1	Alt. Dim. 2	Mat. req.	Purch. spec.	Mass	
1	1	Round rod - EN 10017 - 25mm	-	-	X5CrNiMo17-12-2	Gr. 2.10- ZPS 1009554	0,1kg	
Weight app.:		0,13 kg	Proprietary class: Restricted				EC 1	
Part: Stud f clamps,D25					Draw. format: A3	ISO: 	Draw. scale: 1:1	Sheet no.: 1/1
This document must not be copied or made available to any third party without our written permission. The contents must be used only as agreed with us. Breach of the above will cause legal action. Siemens Gamesa Renewable Energy A/S		Siemens Gamesa Renewable Energy A/S Borupvej 16 DK-7330 Brande +45 9942 2222			SIEMENS Gamesa RENEWABLE ENERGY		ECN No.: C01057191 Design ID: D1911270	Revision: 001

**Additional technical requirements**  
Additional requirements regarding base-material, welding, non destructive testing, surface treatment etc. see submitted technical specifications given by the purchase order.