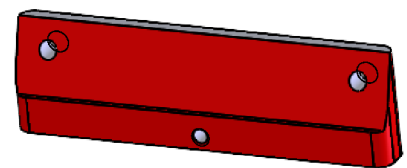


Break angles with chamfer 0.3 to 0.5 x 45°




TOLERANCES UNLESS OTHERWISE STATED

LINEAR	ANGULAR
X ± 0.5 mm	X ±1°
X.X ± 0.1 mm	X.X ±0.5°
X.XX ± 0.05 mm	

Notes

- For information only, previous drawing ref. was DT-1716

Rev AC in preliminary

Material: Aluminium EN AW-6082			Surface Treatment / Finish / Information N/A		
	Drawn By RKE	Modified By N/A	State In Work		Standard ISO mm
	Drawn Date 10 Feb 2022	Related Part / Assy 29703235	Approved Date		
Description Earth connection base display			Drawing No. 29793271	Revision AC	Sheet 1 / 1