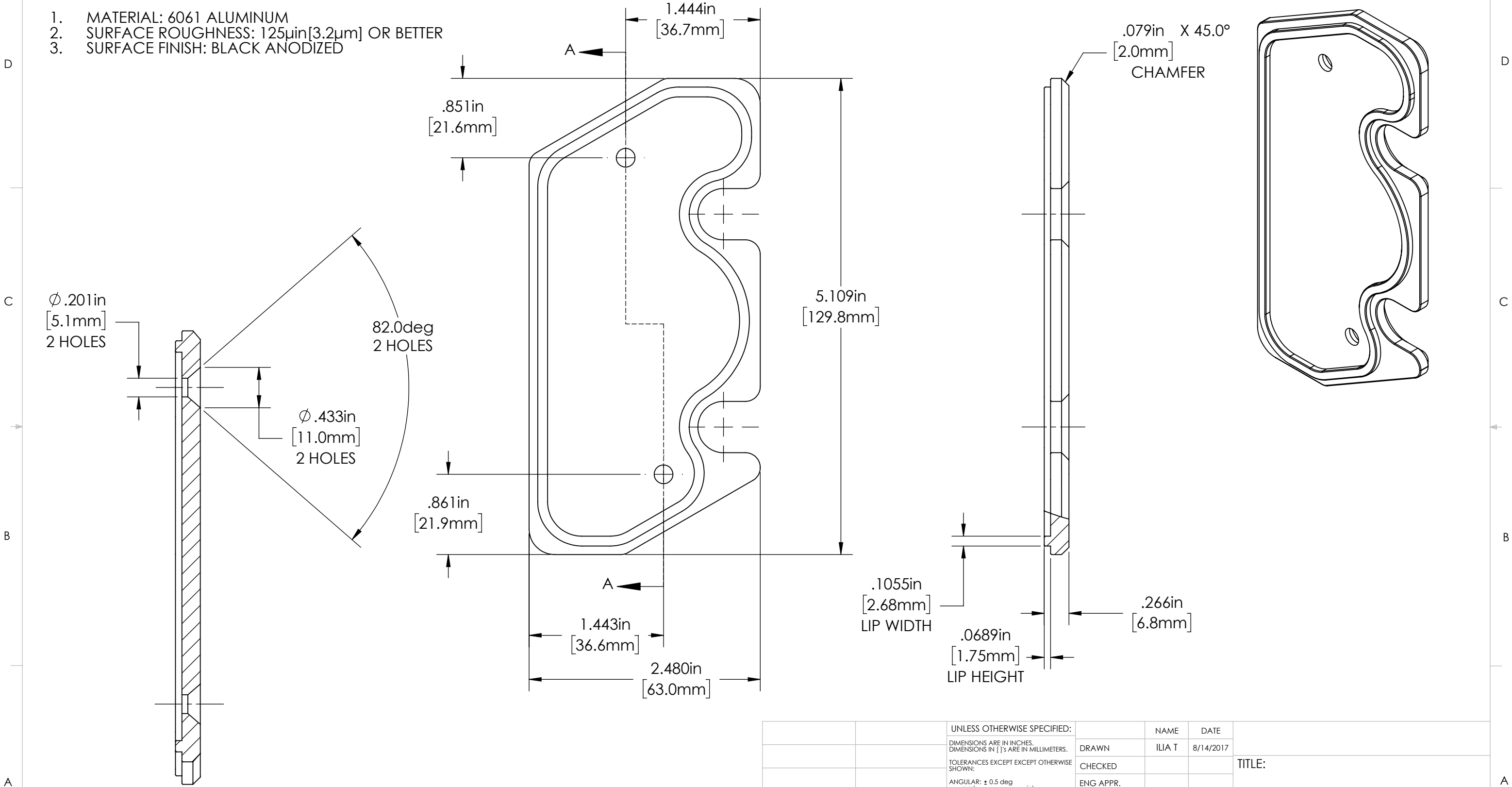


- NOTES:
- 1. MATERIAL: 6061 ALUMINUM
 - 2. SURFACE ROUGHNESS: 125µin[3.2µm] OR BETTER
 - 3. SURFACE FINISH: BLACK ANODIZED



		UNLESS OTHERWISE SPECIFIED:	NAME	DATE	TITLE: <div>Cover</div>			
		DIMENSIONS ARE IN INCHES. DIMENSIONS IN []'s ARE IN MILLIMETERS.	DRAWN	ILIA T				8/14/2017
		TOLERANCES EXCEPT EXCEPT OTHERWISE SHOWN:	CHECKED					
		ANGULAR: ± 0.5 deg 						