

D

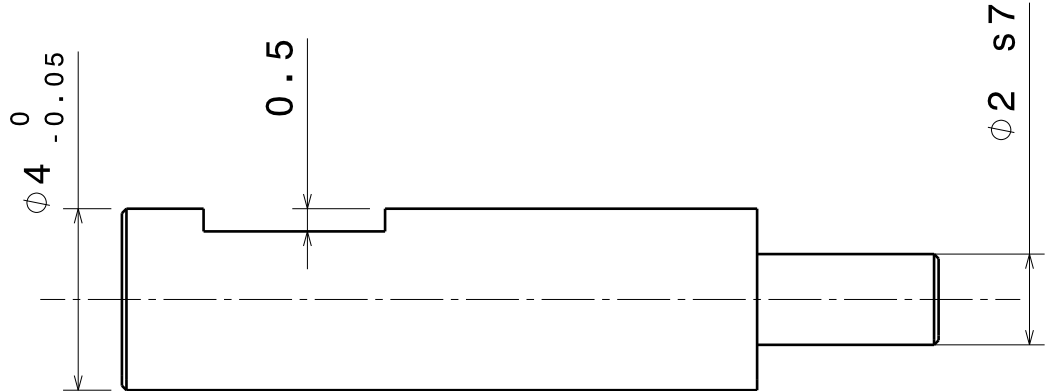
C

B

A

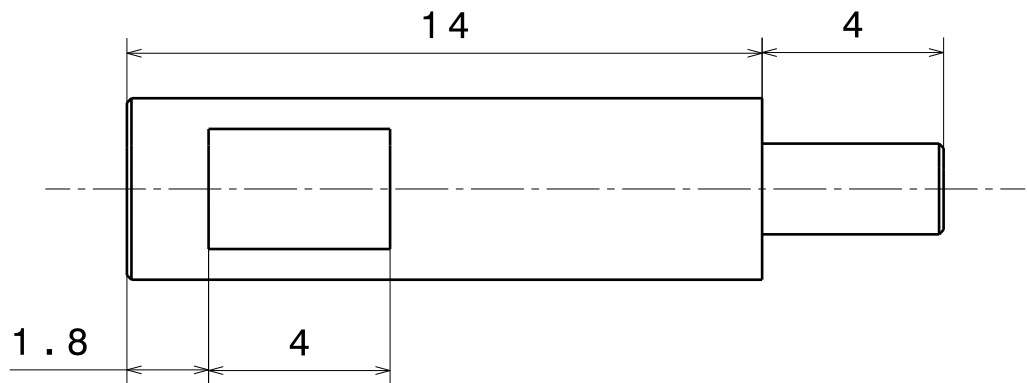
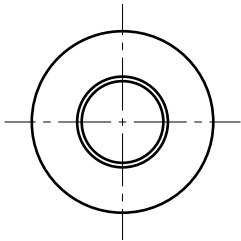
4

4



3

3



2

2

Length unit: mm
Number of parts: 1
Merial: Stub steel
General tolerance: +/- 0.1 mm
Comment 1: All chamfers are 0.1 mm deep with angle 45°.

1

1

This drawing is our property.
It can't be reproduced
or communicated without
our written agreement.

OBSERVATOIRE DE LA COTE D'AZUR - C2PU

DRAWN BY
J.P. RIVET

DATE
21/11/2020

DRAWING TITLE
Geared motor:
Shaft E

CHECKED BY
J.P. RIVET

DATE
21/11/2020

SIZE	DRAWING NUMBER	REV
A4	01.03.009.001.013	1

DESIGNED BY
J.P. RIVET

DATE
21/11/2020

SCALE	WEIGHT (kg)	SHEET
6:1	0,002	1 / 1

D

A